

Hair Creations

Catalogue - 2.1



Whatever the world throws at you...

Joli Couture™ European



Luxury. No Compromise. All hand tied hair creation. See page 6.

Joli Esprit™ European



Medical hair loss and general purpose. See page 8.

#AdaptBeautifully

Joli Dancer™ European



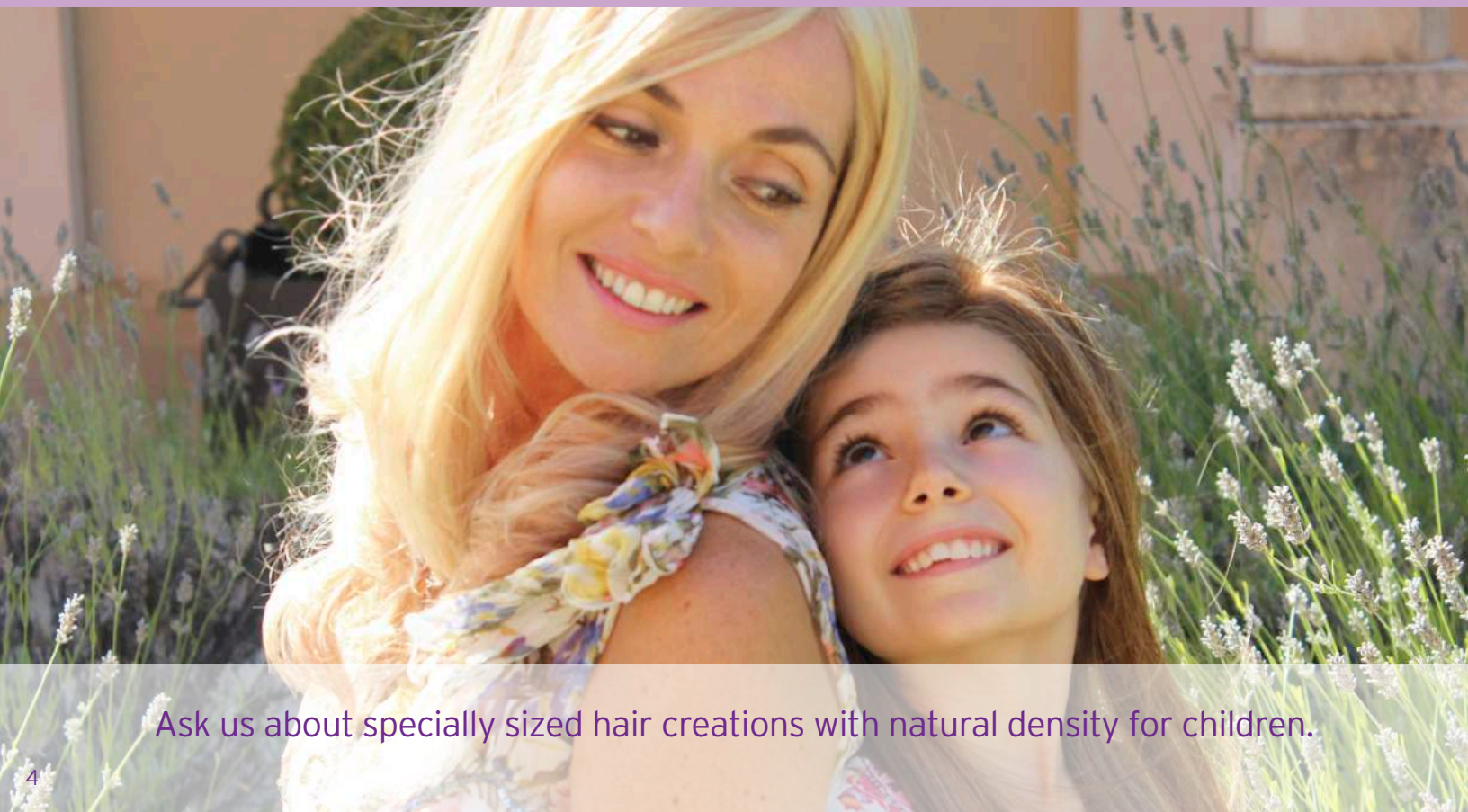
The world's best performing wig for near to total hair loss. See page 12.

Joli Flexi Toppe™ European



Add volume and length to thinning hair. Safer than extensions. See Page 14.

For women and children of all ages



Ask us about specially sized hair creations with natural density for children.

Welcome to the beautiful world of luxurious European hair

Our Mantra: Whatever the world throws at you..

#AdaptBeautifully

Many of us are in a place where our choice of added hair is an essential part of our daily wardrobe - hair that we need to wear every day. If so, Joli Caméléon is the perfect choice. Our mantra is simple: Whatever the World Throws at You . . . #AdaptBeautifully.

Today the 'anti-aging' movement is in full swing. We strive for age to be 'just a number' - to be young in mind, spirit and body. There has never been more choice of treatments, potions and accessories designed to help us retain our natural beauty well into our later years. Nothing changes our appearance faster and more dramatically than 'wearing' great hair.

Joli Caméléon designs its luxurious European hair creations for high performance, while being imperceptible and very beautiful.

If hair loss has changed how you live, our objective is clear: to give you your life back. Without compromise. And how we measure our achievement of that objective? When you look in the mirror and smile. When you take a carefree drive with the top down. When you join a one-hour hot yoga class, wearing your hair. When you go dancing or running with your friend. When your daughter's wedding is all about your daughter and the family photos are awesome.

If you are ready to turn back the clock, let us arrange a visit for you with your nearest independent Joli Caméléon Professional hair studio. On behalf of all your Joli Caméléon team we thank you for choosing Joli Caméléon.

Whatever the world throws at you...	2
#AdaptBeautifully	3
For women and children of all ages	4
Joli Couture™	6
Your best hair day, everyday	7
Joli Esprit™	8
Love the smile you see in the mirror	9
Discovering I can dance with hair again...	10
Joli Dancer™ European	12
Joli Flexi Toppe™	14
Wearing hair is a choice...	15
Your Joli Caméléon™ Studio Experience	18
Hair Luxury & Value	19
I choose my color. My color does not choose me	20
Real People. Real Places, Real Hair, Real Beauty	21
Accessories catalogue	22

Joli Couture™

Haute Couture Hair Without That Price Tag

Model: LLC2-E2

Hair Type: European Fine™

Description: All hand-tied. French top for natural scalp look. Hidden knots. Small lace front. Tape tabs.

Hair Application: A luxury hair creation without the luxury price tag. Featuring our beautiful European hair. Fashion, professional, photography, Alopecia, female pattern hair loss & thinning, medical-related hair loss.

Cap Design:





Your best hair day, every day.

Joli Esprit™

Means Beautiful Spirit. That Speaks To Me.

Model: LLC8-E2

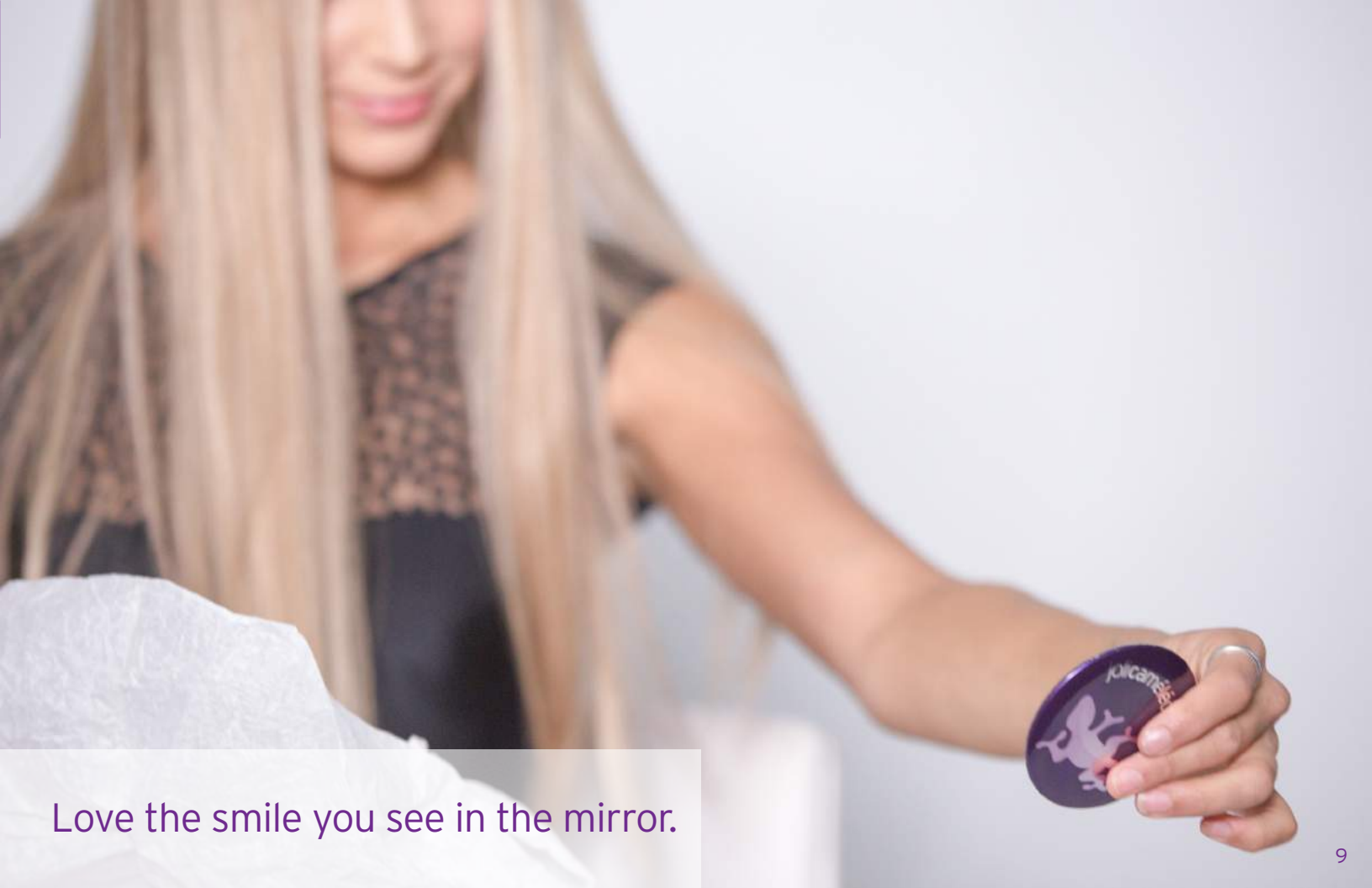
Hair Type: European Fine™

Description: Hand-tied lace top. ComfortFit™ back. Small lace front. Tape tabs.

Hair Application: The perfect hair choice for all reasons. Fashion, professional, photography, Alopecia, female pattern hair loss & thinning, medical-related hair loss. Beautiful European hair at a price less than you'd expect.

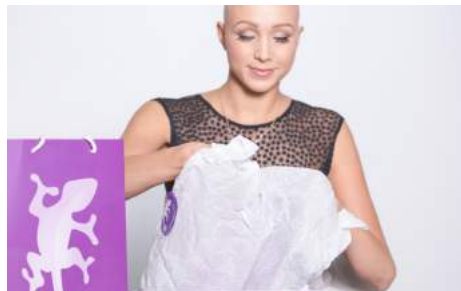
Cap Design:





Love the smile you see in the mirror.

Discovering I can dance with hair again...





Priceless



Joli Dancer™ European

Priceless

Model: SAP5-E2

Hair Type: European Standard™

Description: French Flexi-Top™ for natural scalp look. Hidden knots. All hand-tied. Small lace front with updated contouring. Mono ribbon reinforcement. Joli UltraGrip™ panels made from highest quality US manufactured silicone to our specifications. Now with European Standard™ hair.

Hair Application: A completely new design with amazing one-length hair at an affordable price. This purpose-designed, feather-light, all hand-tied, hair replacement option for women & children with little or no hair of their own, features our flexible French top with natural scalp look. Secure, comfortable fit requires no tape or glue, for a 'like it's not there' feel. Designed with Alopecia Areata in mind, especially Totalis & Universalis. Suitable for active lifestyles.

Cap Design:





Now I Wear The Style I Always Wanted
Even When My Hair Won't Grow There.

Joli Flexi-Toppe™

I Found Length, Fullness And A Perfect Scalp.

Model: JT2-E1

Hair Type: European SuperFine™

Description: All hand-tied. French Flexi-Toppe™. Hidden knots with return hairs for volume. Complete with (removable) sewn-in clips.

Hair Application: The perfect luxury hair addition for a volume look. Available in 14" and 18" lengths, with a choice of 2 base sizes. This is an excellent choice for women living with Alopecia, female pattern hair loss & thinning - the chance to get back their full volume, length and body. It is also a fashion alternative to extensions for special events or photography sessions. And much kinder to your hair. Very light, breathable, flexible and comfortable. Featuring our rarest European hair.

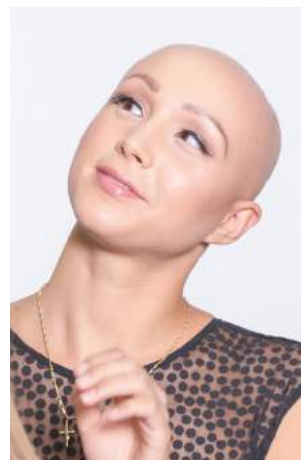
Cap Design:

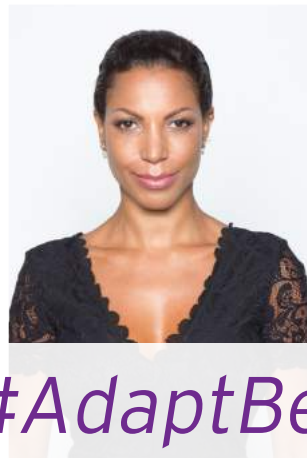


Wearing hair is a choice...



We are the choice that makes you smile.





Join Us. #AdaptBeautifully

Your Joli Caméléon™ studio experience

1. Choose your studio



Call or email us, or use our JoliCameleon.com locator to select your nearest Authorized Studio.

2. Your hair



Discuss your personal hair application with your Authorized Joli Caméléon™ Hair Studio.

3. Your choice



Choose the Joli Caméléon™ creation that best fits your needs.

4. Color?



Choose your Joli Caméléon™ color, or create your own.

5. How Long?



Choose your preferred hair length.

6. Perfect Fit



Get measured for best fit at your nearest Authorized Joli Caméléon™ Hair Studio.

Hair Luxury & Value

At JoliCaméléon™ we create our advanced design natural wigs and Toppe™ hairpieces from the finest quality hand-selected European hair. It is cut and purchased from willing donors whose life it improves. We offer 3 European hair types for specific product application and price target reasons. All our hair starts out as cuticle intact, unprocessed, virgin ponytail hair. It is then double-drawn to remove shorter hairs and gently worked to match our color ring or custom color requirements. Our special techniques maintain hair integrity to the best of our ability. Each hair type has its own distinct properties.

European SuperFine™ (E1)



The rarest hair available, triple drawn and selected by hand.

European Fine™ (E2)



Fine European hair with excellent movement.

European Standard™ (E3)



European hair with stronger strands for active wear and frequent washing.

I choose my color. My color does not choose me



Rooted Lightest Blonde

JC: 10JC02 JL: R12/24



California Blonde
with Natural Blonde
Lowlights

JC: 10JC03 JL: 24/14



Rooted Swedish Blonde
with Dark Golden
Blonde Lowlights

JC: 9JC03 JL: R12/22/12



Tricolor Blonde

JC: 6JC02 JL: 24/14/12



Honeyed Blonde

JC: 5JC04 JL: 14/16



Lightest Brown
with Natural Blonde
Highlight

JC: 5JC03 JL: 10/14



Chestnut with Lightest
Brown Blended

JC: 3JC07 JL: 8/10



Chocolate

JC: 2JC06 JL: 4



Darkest Brown

JC: 1JC01 JL: 2



Copper Red

JC: 15JC05 JL: 350

Real People. Real Places. Real Hair. Real Beauty.



JOLI CAMÉLÉON™ and all other Joli Caméléon marks indicated by the ™ or ® symbol are trademarks or registered trademarks of Joli Caméléon in the U.S. and/or other countries. Joli Caméléon is a Division of TMF International Inc.

Credits

Design: Vanilla Active (UK)
Principle Photographer: Lasonic Sivongxay
Content: Holly Slear, Michael Leigh
Text-editing: Bobby Mandel
Technical Director: Holly Slear
Concept & Direction: Michael Leigh
Hair: All Hair & Toppe™ creations by Joli Caméléon

ON LOCATION LOS ANGELES-1
Photography & Editing: Lasonic Sivongxay
Production Assistant: Nancy Wood
Hairstylist: Kariann Wood
Makeup: Tori-Lynn Williams
Models: Franchesca the Joli Dancer™, Katyana

ON LOCATION LOS ANGELES-2
Photography & Editing: Rebecca Stevens
Production Assistant: Jamie Reiff
Hair & Makeup: Samantha Longberg
Models: Carly, Jannica

ON LOCATION, JOLI CAMELEON HQ
Photography and Editing: Maxx-Kaitlynn Reiff
Production Assistant: Nancy Wood
Hair and Make-up: Vicka Khanis
Technical Director: Holly Slear

ON LOCATION CASTELLET, SOUTH OF FRANCE
Thanks to Patrick Giraud: LeCastelletGolfClub.com
Photography: Roland Allard
Production Assistant: Genevieve Allard
Hair: Lou de la Calade, Toulon
Models: Johanna, Josephine, Virginie

ADDITIONAL FEATURED MODELS
Makayla
Young Models:
Katelyn, Madison

Call for Joli Caméléon™ Accessories



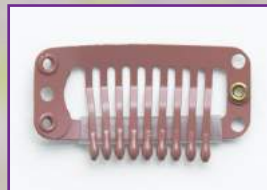
Joli**Care**™ Mannequin
& Clamp



Joli**Grip**™
prevents wig slippage



Joli**Poly**™ Tape clips
Joli sew-in clips



Hair Naturelle™ Nutritive Crème Shampoo and Conditioner



- Before now, no natural premium hair care line has ever been scientifically created for use with both fine European added hair AND natural growth hair.
- We have tested Hair Naturelle™ against over 100 well known branded products in comparison testing in the US and UK.
- Most Hair Replacement Vendor hair care products are repackaged, relabeled generic bulk product lines.
- Others were designed primarily to work on synthetic (plastic) hair and labeled 'also good for human hair'.
- In spite of the cost, we select only the finest ingredients, such as French (perfume grade) pure lavender oil imported directly from a picturesque village in the heart of Provence.

Coming Soon

No Sulphates. No Parabens. No Silicones.



Email

Hair@JoliCameleon.com

Telephone

Los Angeles, USA: +1 310 593 9988

London, UK: +44 (0)20 8908 3242

